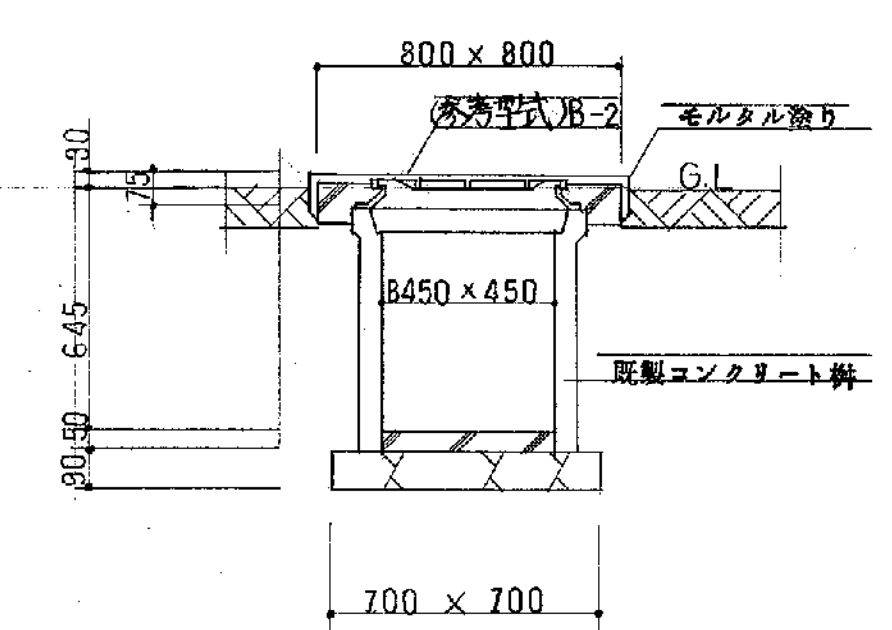
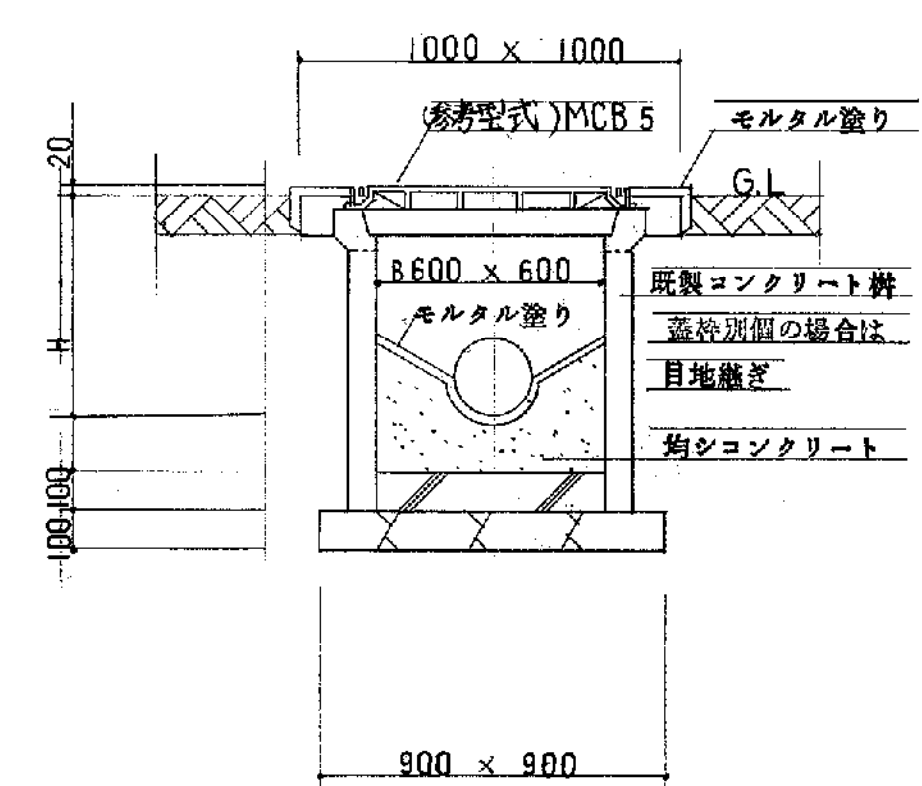


注) Hは配管の埋設深度により決定

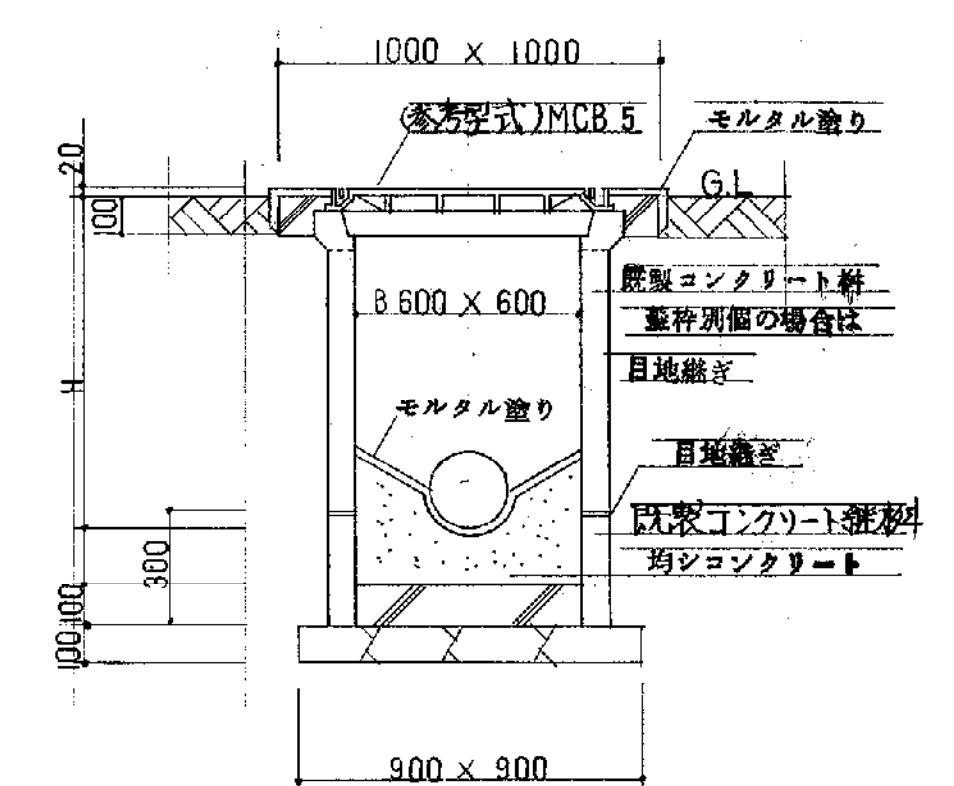
弁井(VC-1) S=1/20



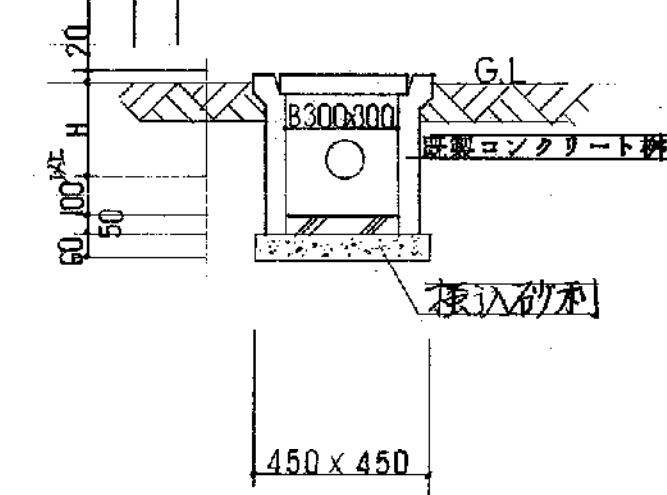
弁井(VC-2) S=1/20



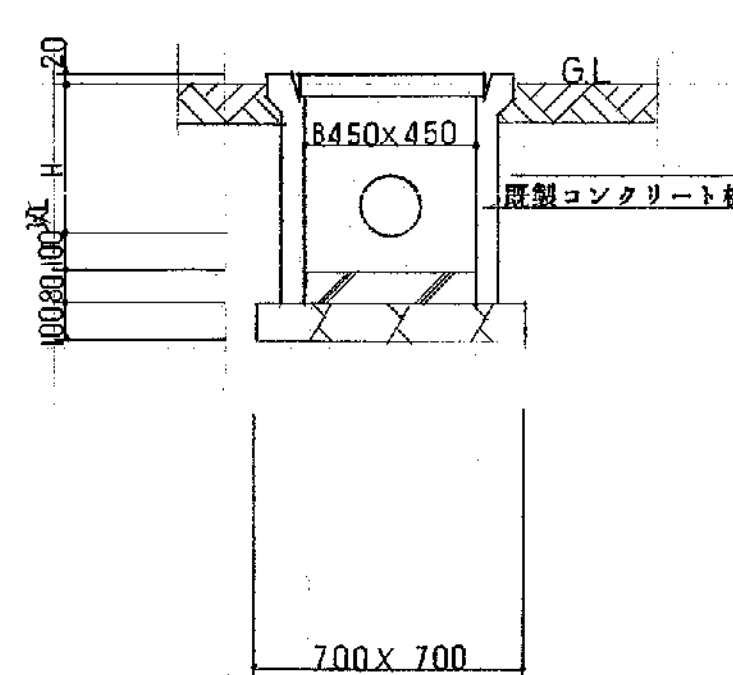
H = 560 ~ 670
汚水井(SC-2) S=1/20



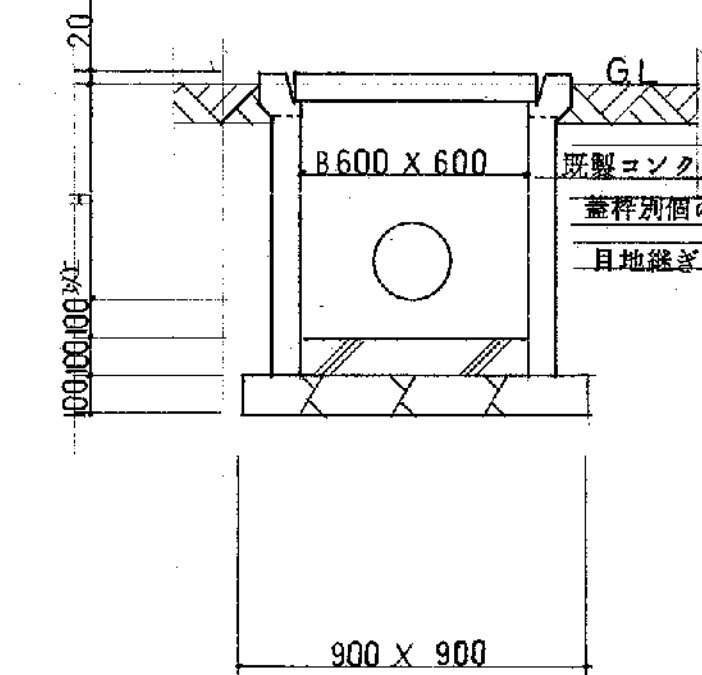
H = 680 ~ 950
汚水井(SC-3) S=1/20



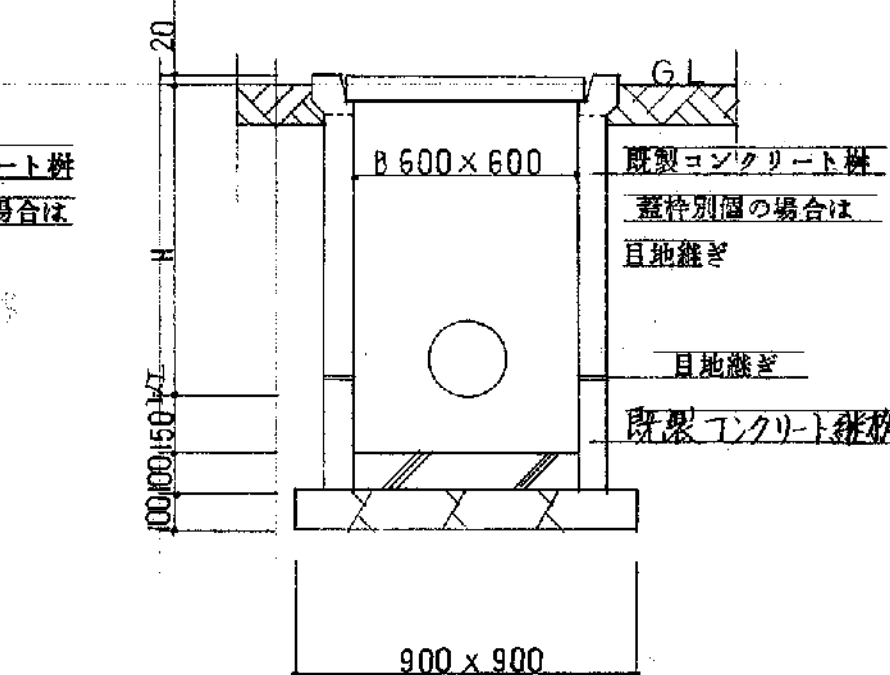
H = ~ 250
雑排水井(A-0) S=1/20



H = 260 ~ 400
雑排水井(A-1) S=1/20

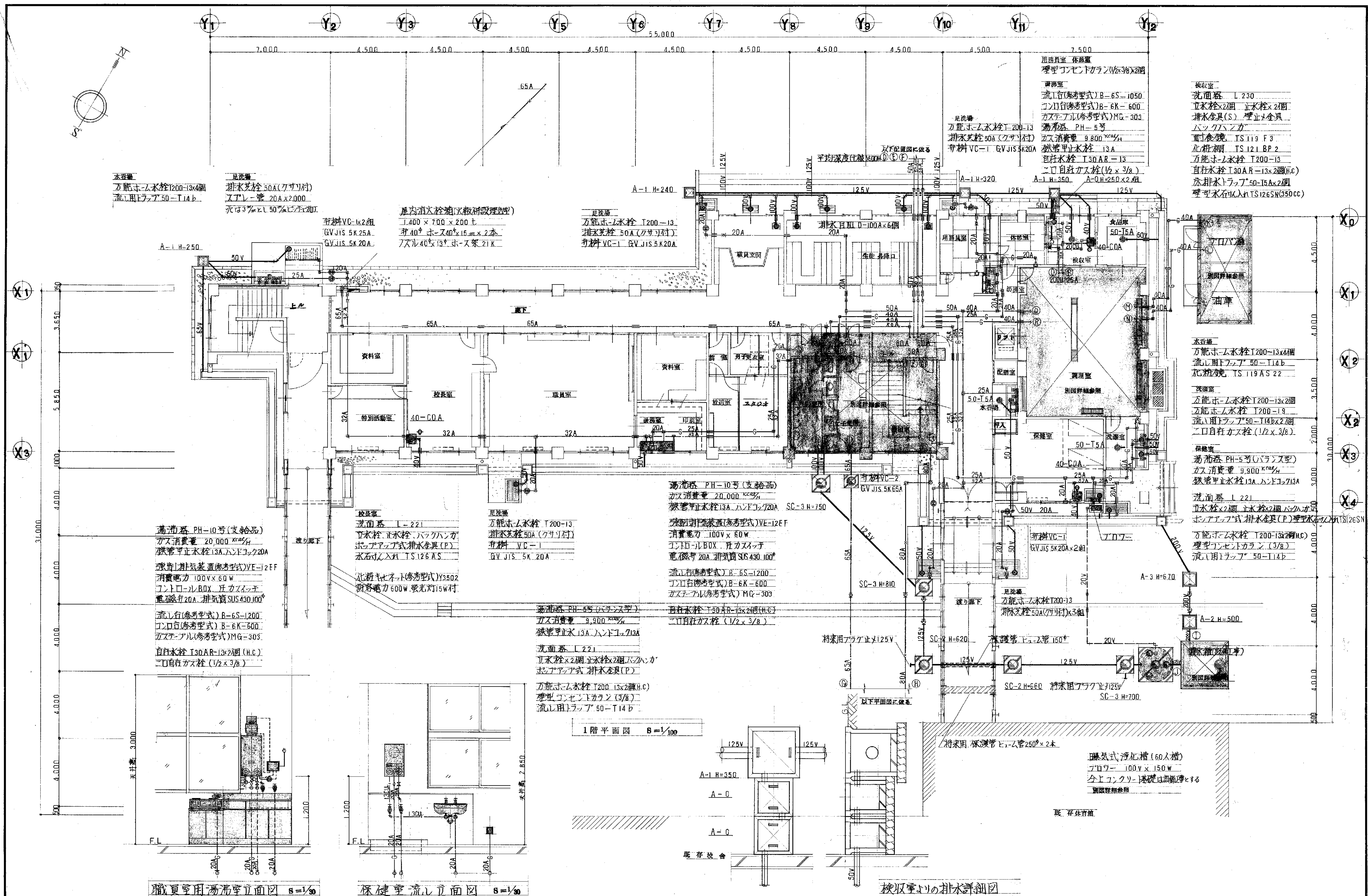


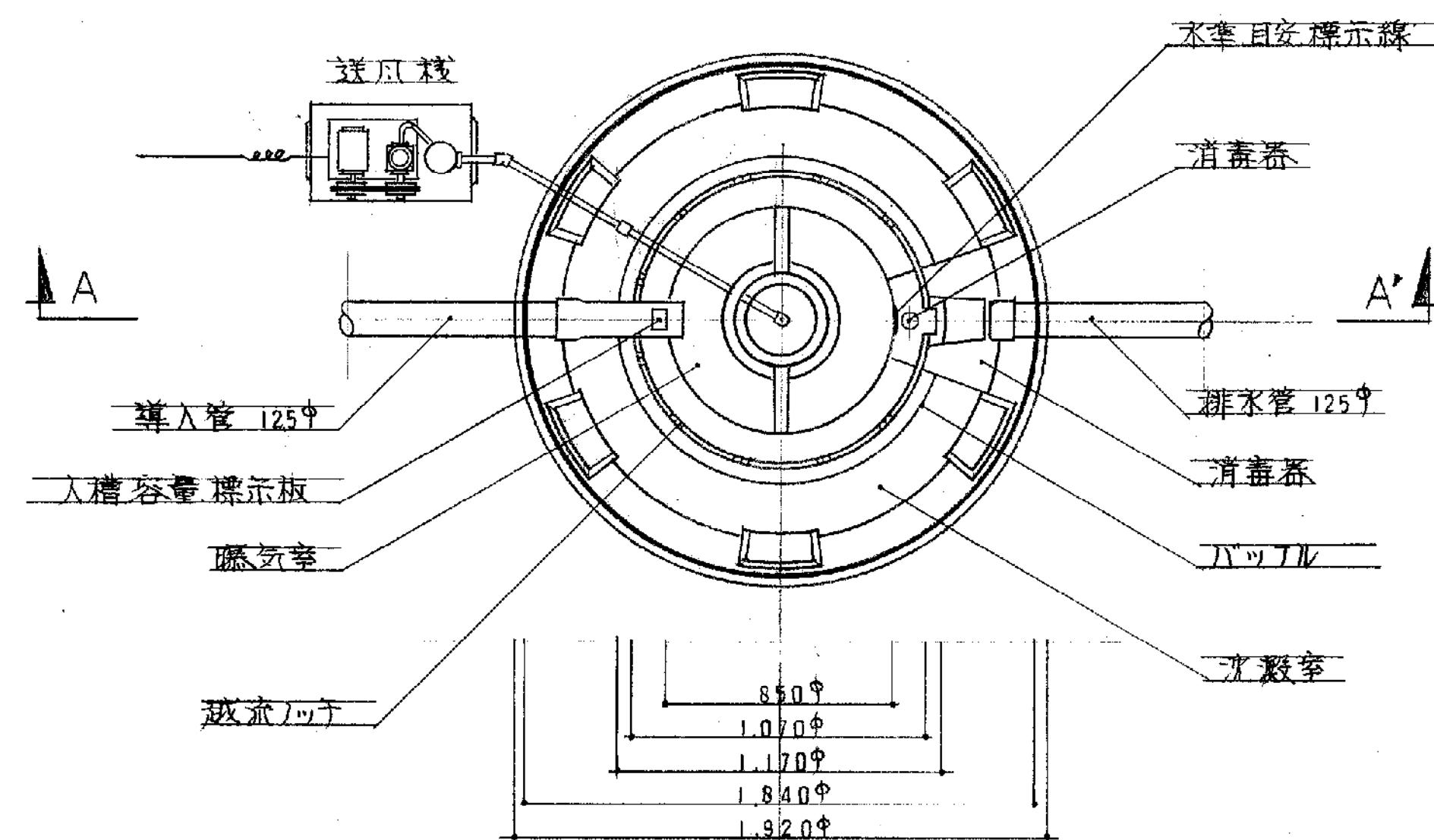
H = 410 ~ 550
雑排水井(A-2) S=1/20



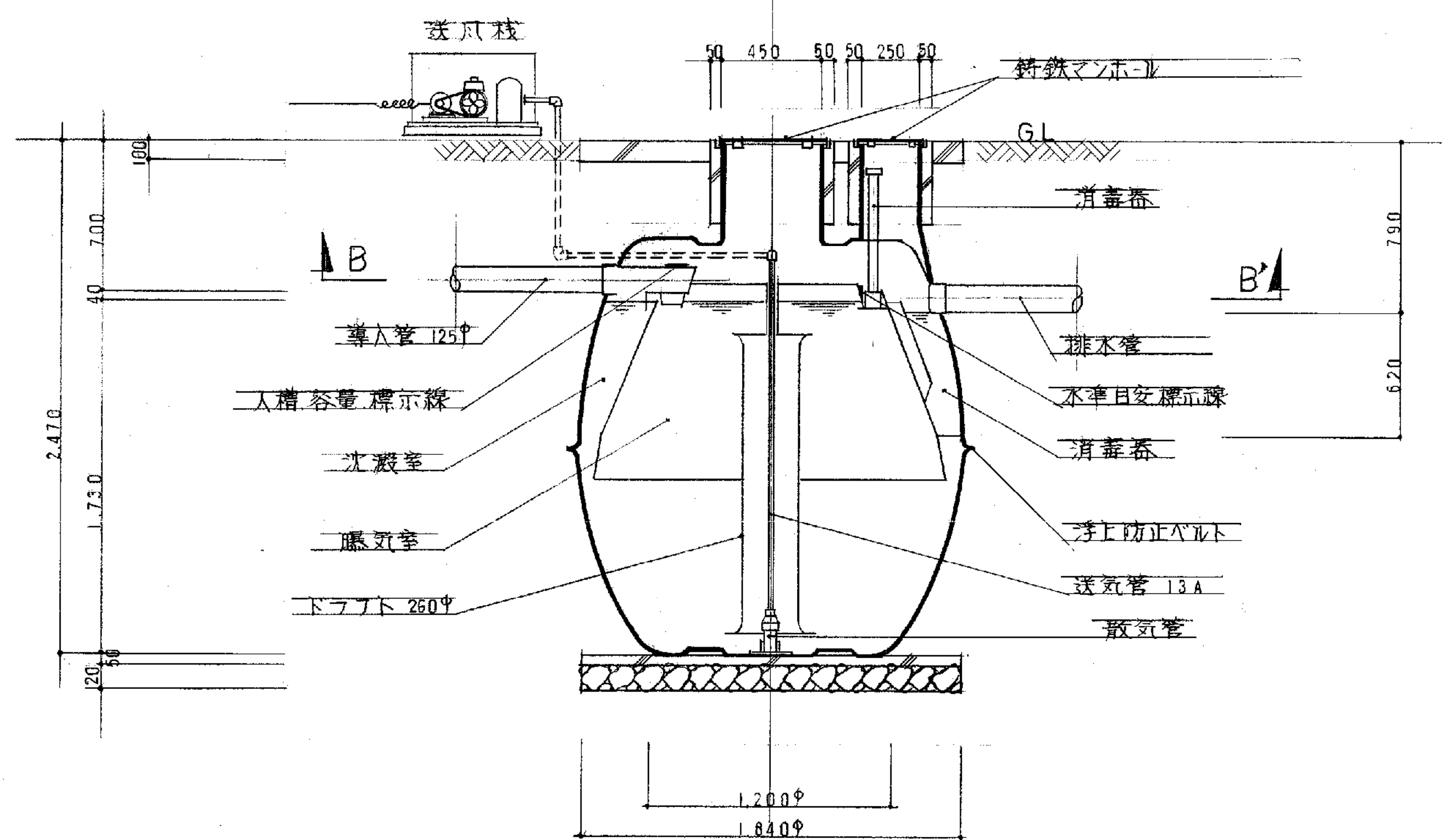
H = 560 ~ 800
雑排水井(A-3) S=1/20

備考

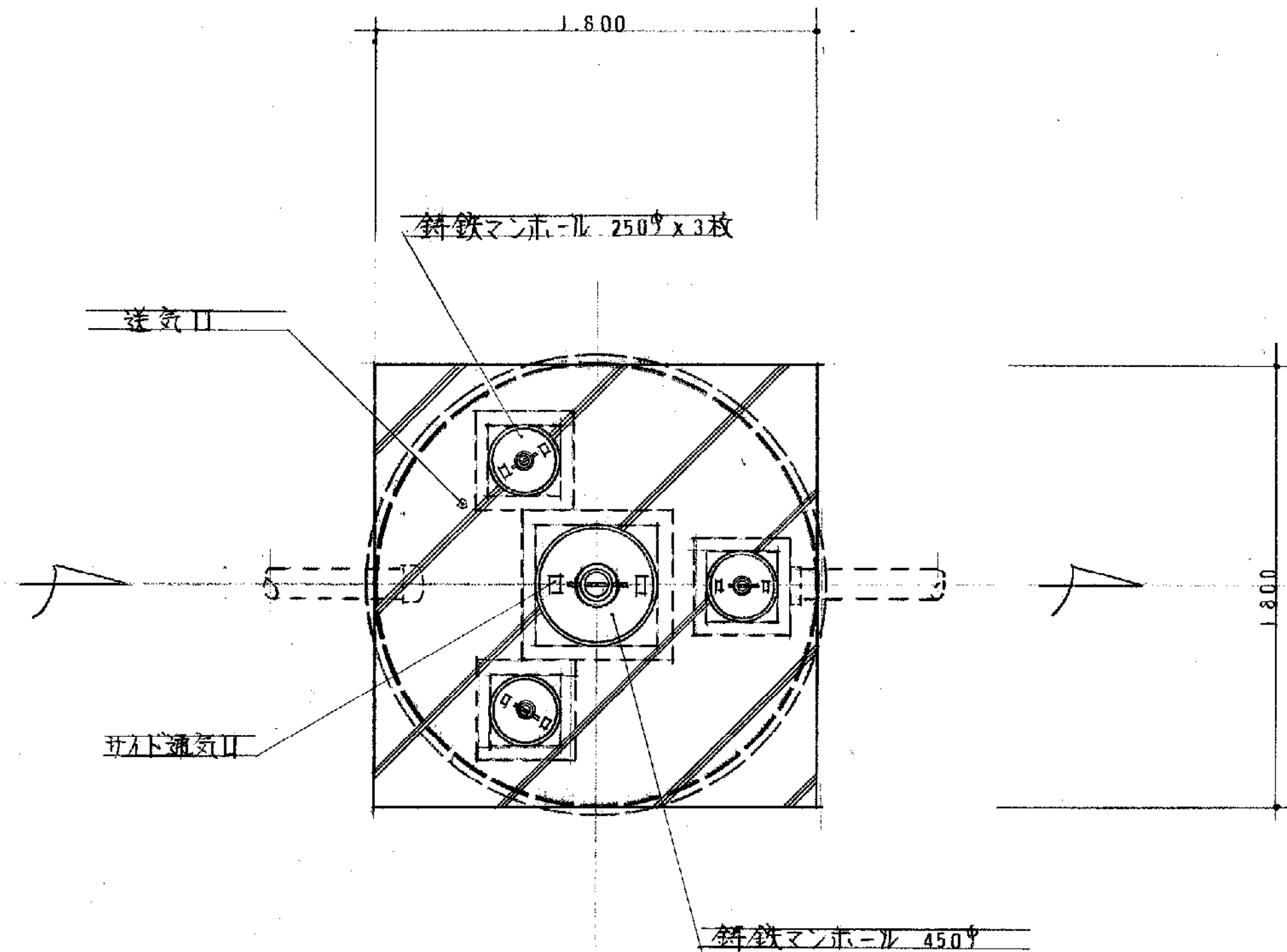




B-B' 断面図 S=1/20



A-A' 断面図 S=1/20



平面図 S=1/20

容量表	曝気室	3.1691
(m ³)	沈殿室	0.6337
	消毒室	0.0546
	総容量	3.8574
ブローア	13φ x 120/min x 100V x 200W	
60人槽	長時間曝気方式	